

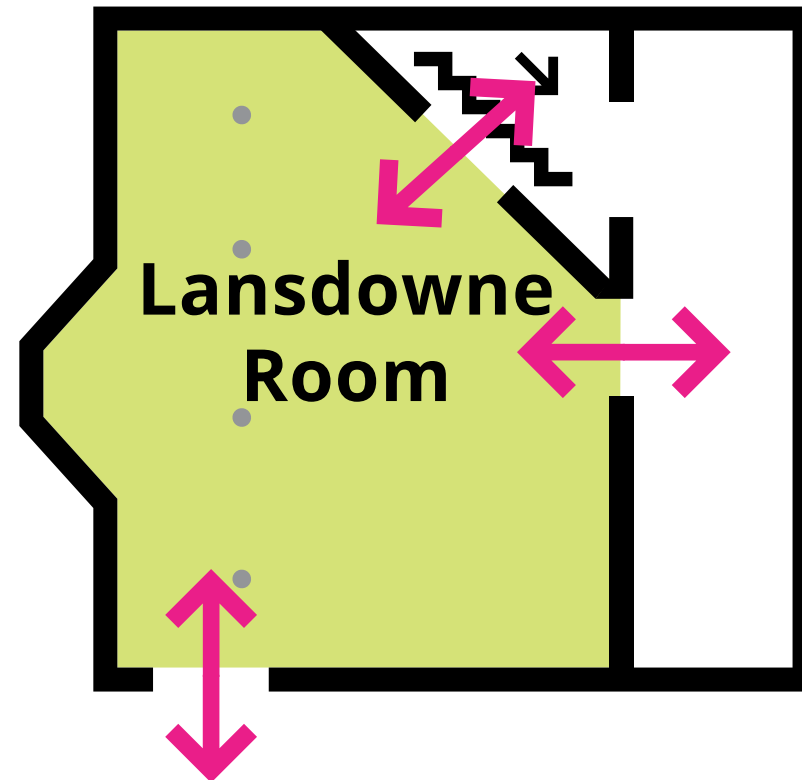
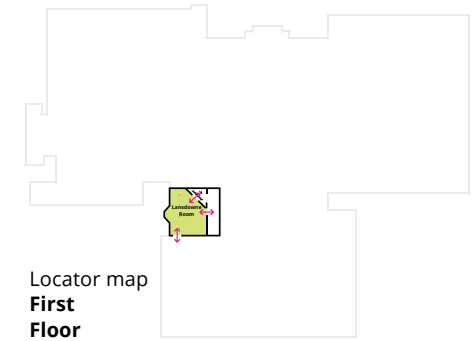
Lansdowne Room

First Floor

| LANSDOWNE ROOM TECHNICAL DETAILS | |
|------------------------------------|---------------------|
| Gross Area | 186.9 Sq m |
| Width | 14.4 m |
| Length | 14.3 m |
| Height Max | 3.75 m |
| Height Min | 3.33 m |
| Floor Loading | n/a |
| Electrical Power | 13 Amp Single Phase |
| Floor Level | First |
| Wi-Fi | Available |

| CAPACITIES | |
|------------|-----|
| Reception | 180 |
| Theatre | 170 |
| Banquet | 140 |
| Classroom | 78 |
| Exam | 85 |
| Cabaret | 72 |

IMPORTANT: The size and location of items such as a staging AV, lighting, bar, buffet tables etc. impact the capacities listed. The figures here are indicative of the maximum capacity in a space. The capacity for your event will depend on your layout and may be less than the figures stated.



T: +353 (0)1 668 0866 | sales@rds.ie | www.rds.ie



Lansdowne Room

First Floor – Details

