

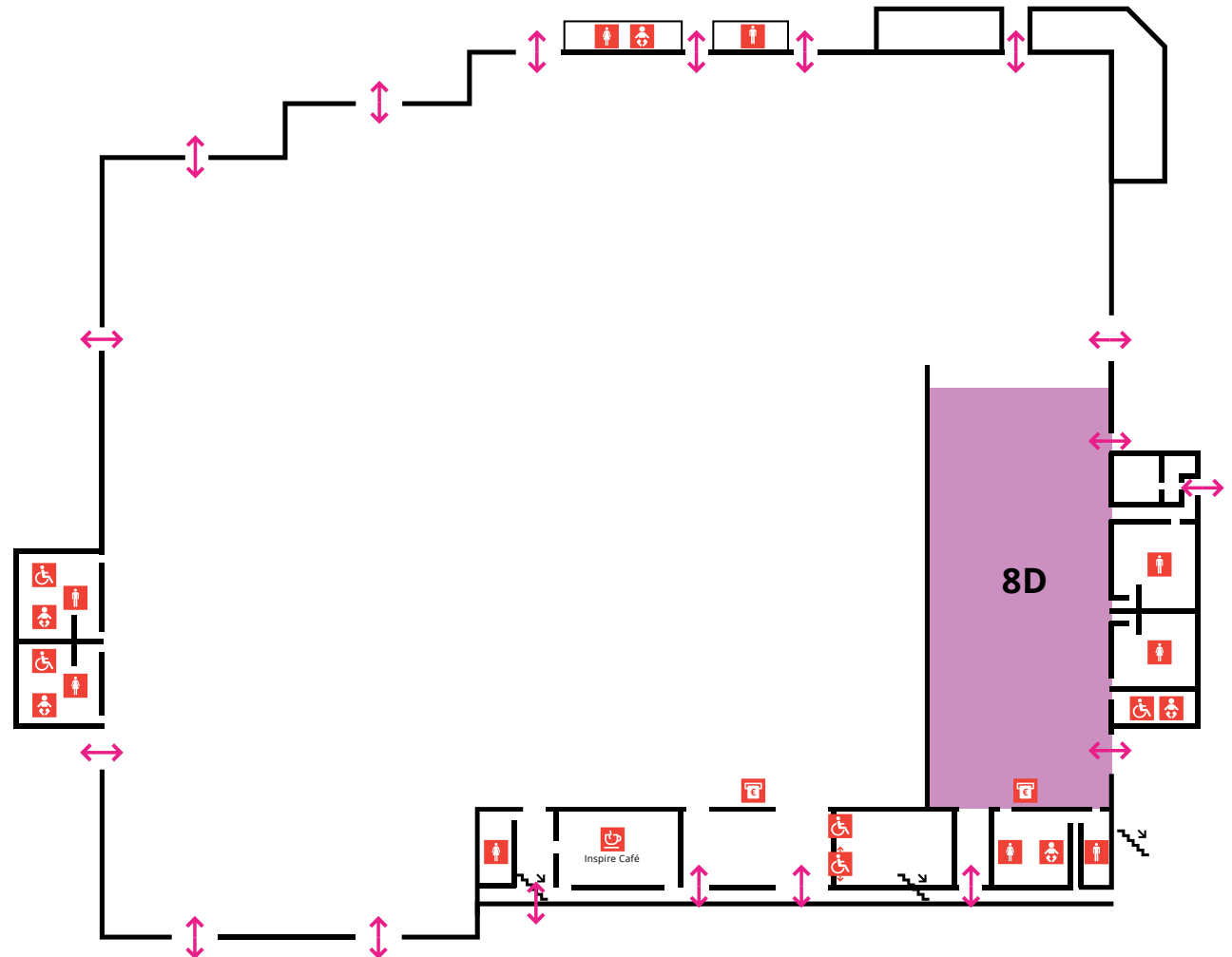
# Simmonsourt Pavilion

## Hall 8D

HALL 8D   TECHNICAL DETAILS	
Gross Area	864 Sq m
Width	21.9 m
Length	39.3 m
Height Max	6 m
Height Min	n/a
Floor Loading	50 KN/Sq m
Electrical Power	1 x 80 Amp/3 Phase
Main Loading Door Height x Width	5.56 m x 5.59 m
Floor Level	Ground
Wi-Fi	Available

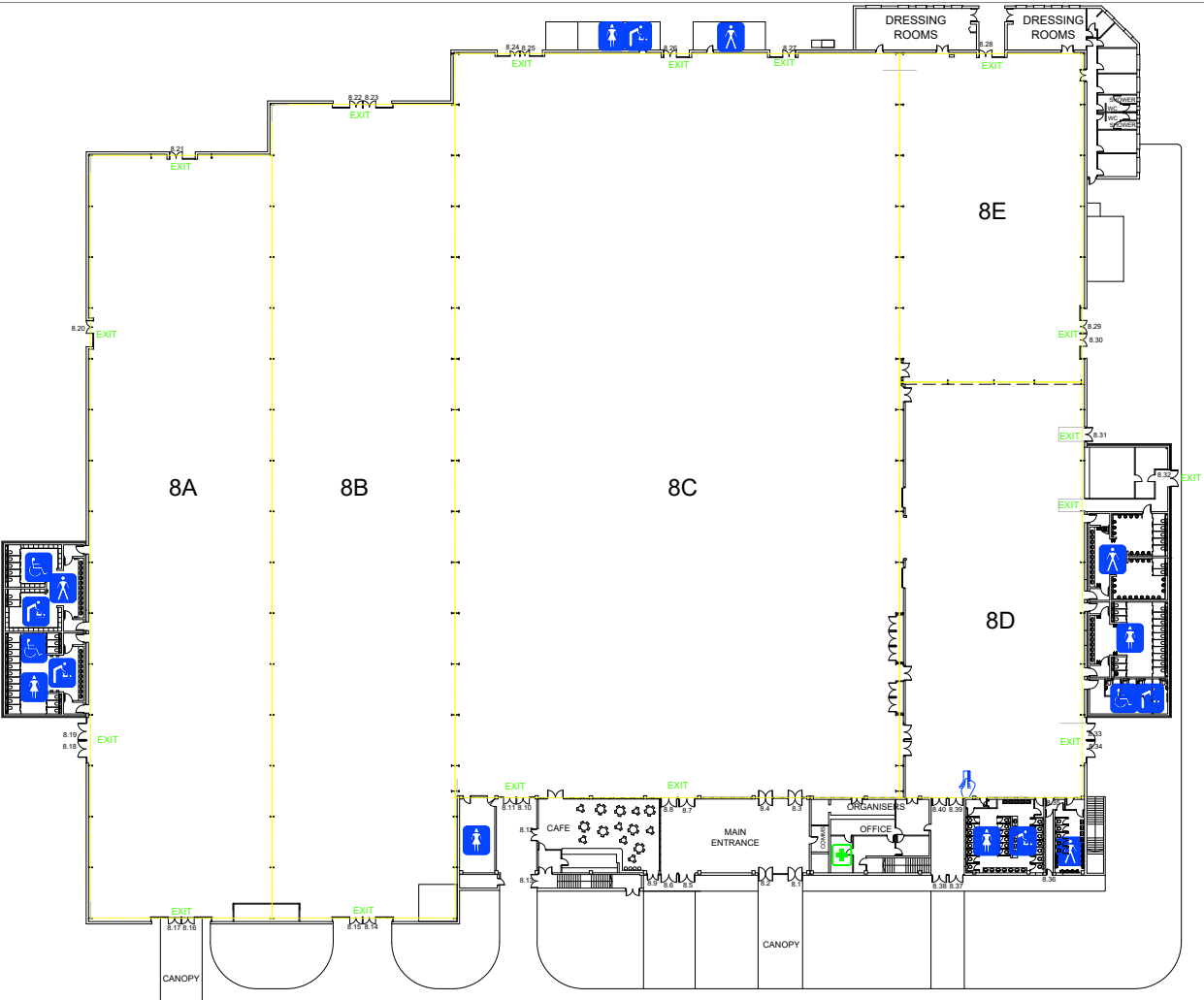
CAPACITIES	
Reception	1,150
Theatre	1,000
Banquet	600
Classroom	620
Exam	590
Cabaret	440

**IMPORTANT:** The size and location of items such as a staging AV, lighting, bar, buffet tables etc. impact the capacities listed. The figures here are indicative of the maximum capacity in a space. The capacity for your event will depend on your layout and may be less than the figures stated.

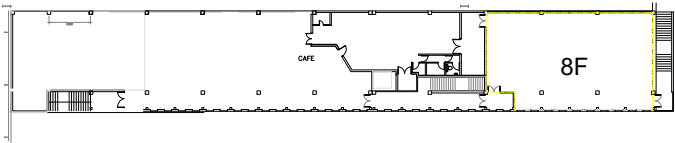


# Simmonsourt Pavilion

## Hall 8D – Details



GROUND FLOOR PLAN



FIRST FLOOR PLAN

