

Simmonsourt Pavilion

Hall 8C

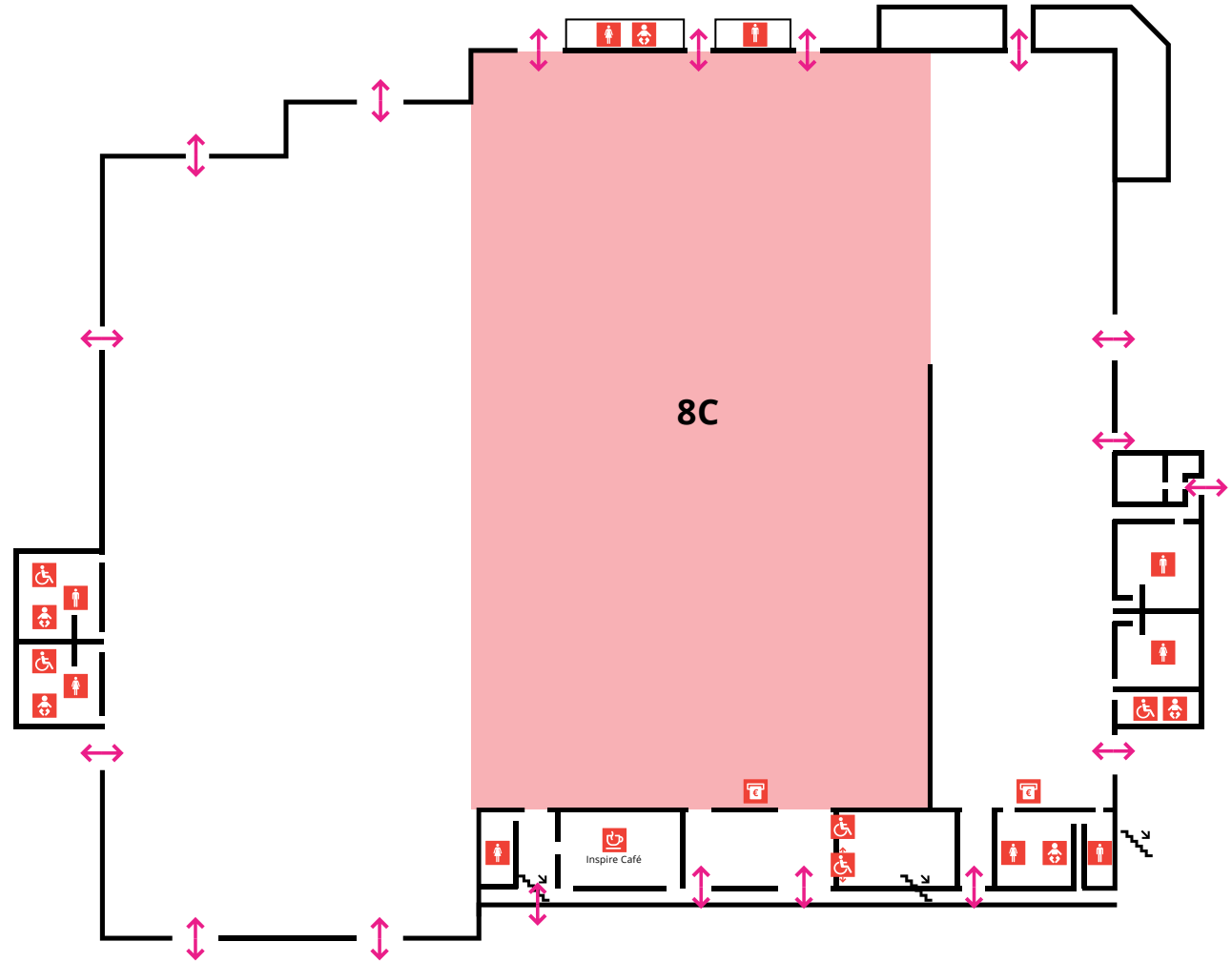
HALL 8C | TECHNICAL DETAILS

Gross Area	4,754 Sq m
Width	53.3 m
Length	89.2 m
Height Max	14 m
Height Min	6 m
Floor Loading	50 KN/Sq m
Electrical Power	4 x 160 Amp/3 Phase
Main Loading Door Height x Width	6.25 m x 4.32 m
Floor Level	Ground
Wi-Fi	Available

CAPACITIES

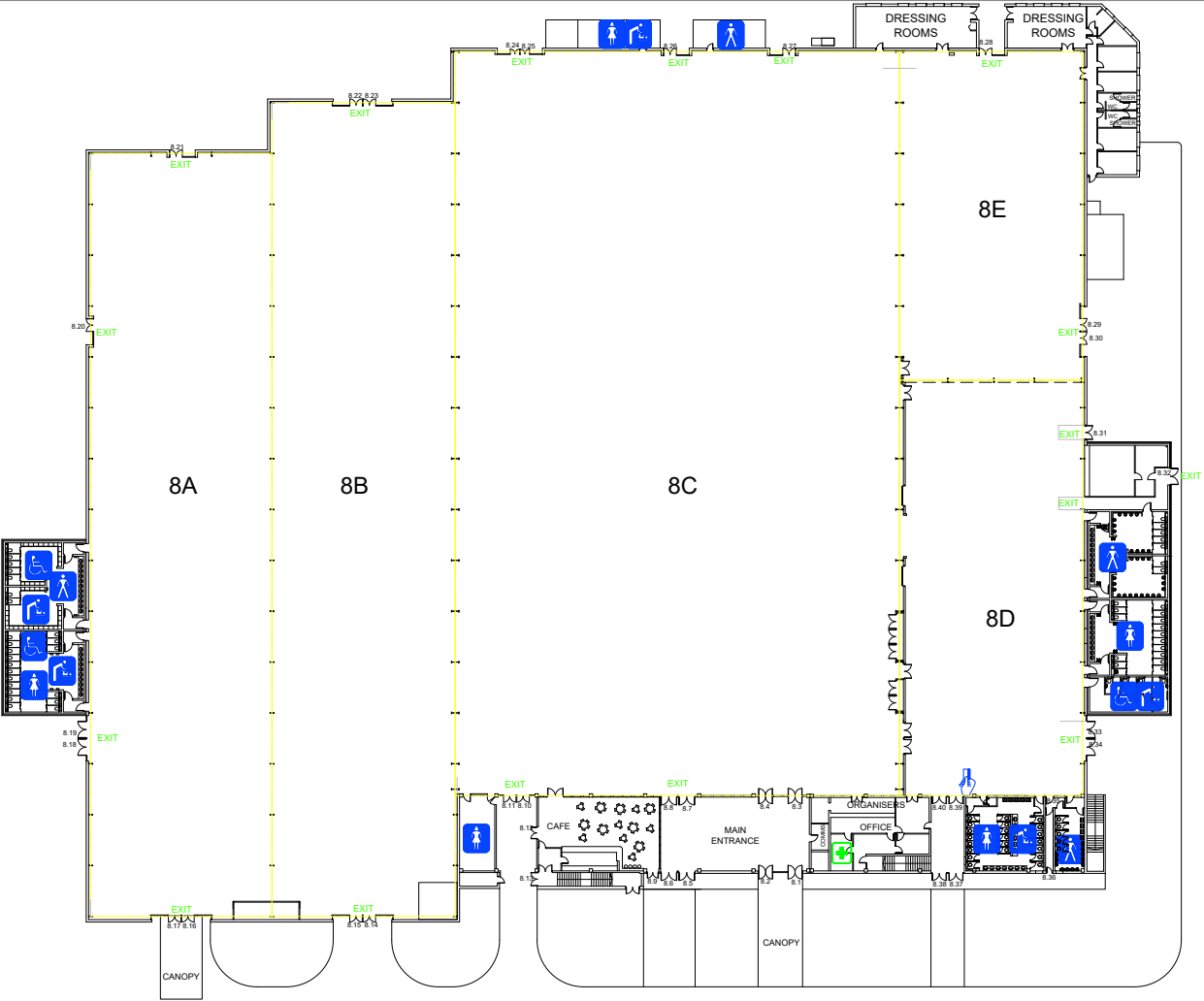
Reception	6,300
Theatre	6,500
Banquet	2,970
Classroom	2,880
Exam	2,895
Cabaret	2,186

IMPORTANT: The size and location of items such as a staging AV, lighting, bar, buffet tables etc. impact the capacities listed. The figures here are indicative of the maximum capacity in a space. The capacity for your event will depend on your layout and may be less than the figures stated.

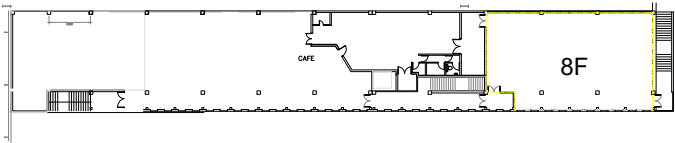


Simmonsourt Pavilion

Hall 8C – Details



GROUND FLOOR PLAN



FIRST FLOOR PLAN

