

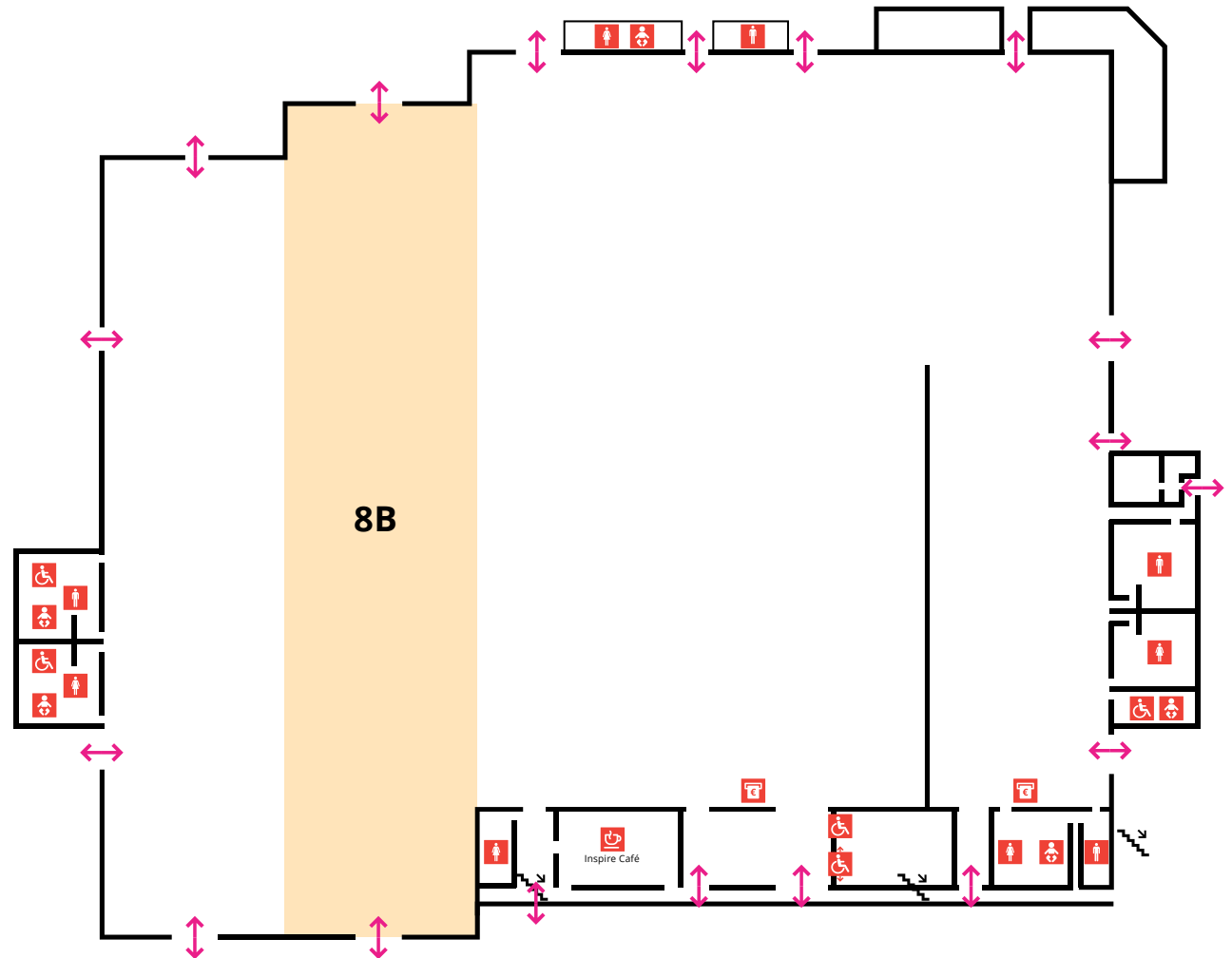
Simmonsourt Pavilion

Hall 8B

| HALL 8B TECHNICAL DETAILS | |
|----------------------------------|---------------------|
| Gross Area | 2,145 Sq m |
| Width | 22.9 m |
| Length | 97.6 m |
| Height Max | 9 m |
| Height Min | 6 m |
| Floor Loading | 50 KN/Sq m |
| Electrical Power | 2 x 160 Amp/3 Phase |
| Main Loading Door Height x Width | 5.61 m x 5.56 m |
| Floor Level | Ground |
| Wi-Fi | Available |

| CAPACITIES | |
|------------|-------|
| Reception | 2,800 |
| Theatre | 2,200 |
| Banquet | 1,270 |
| Classroom | 1,310 |
| Exam | 1,200 |
| Cabaret | 944 |

IMPORTANT: The size and location of items such as a staging AV, lighting, bar, buffet tables etc. impact the capacities listed. The figures here are indicative of the maximum capacity in a space. The capacity for your event will depend on your layout and may be less than the figures stated.

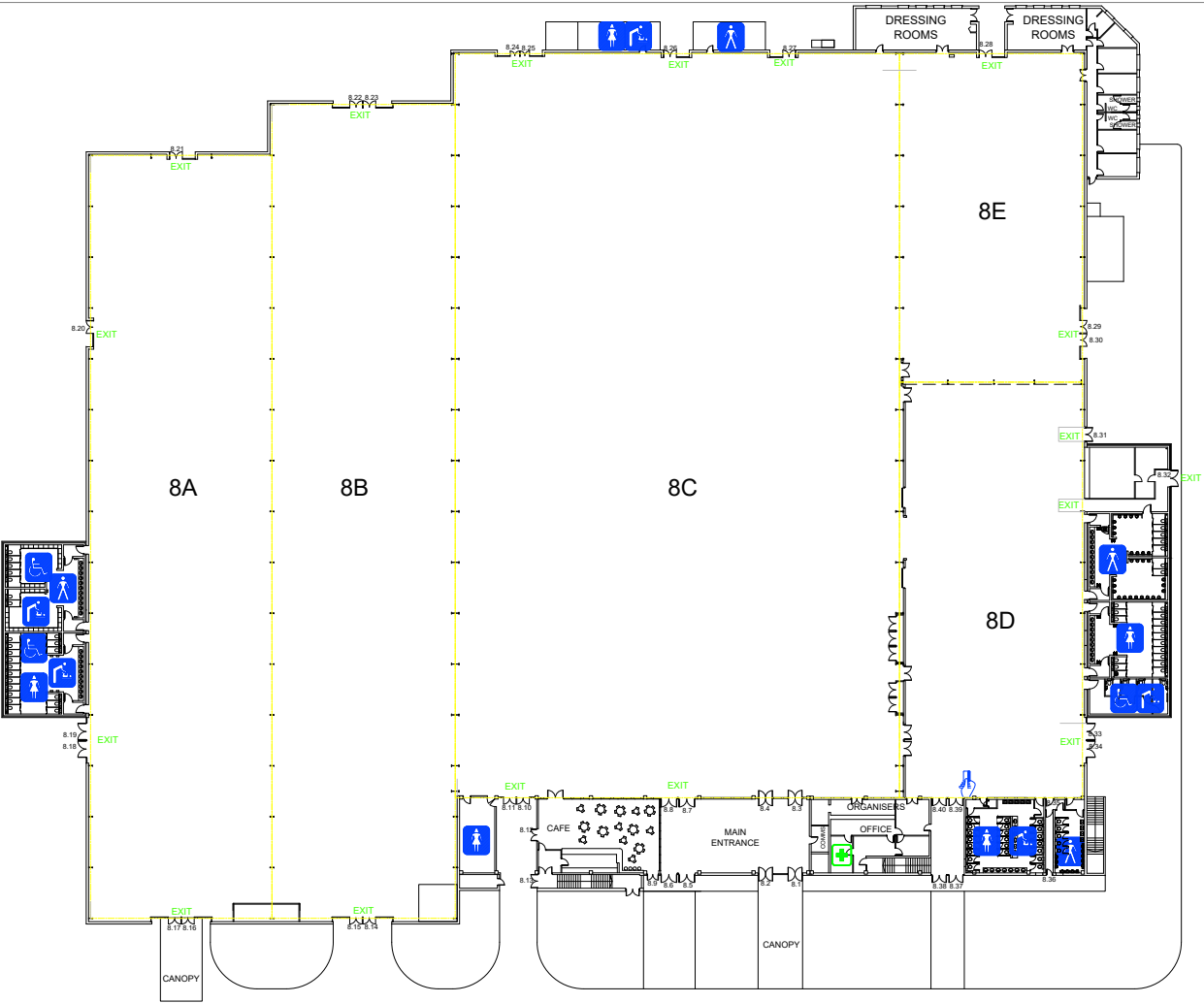


T: +353 (0)1 668 0866 | sales@rds.ie | www.rds.ie

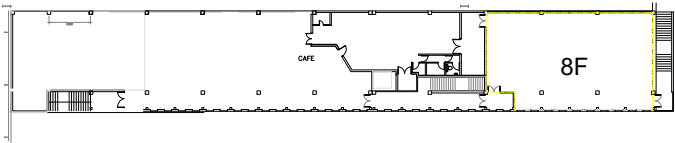


Simmons Court Pavilion

Hall 8B – Details



GROUND FLOOR PLAN



FIRST FLOOR PLAN

