

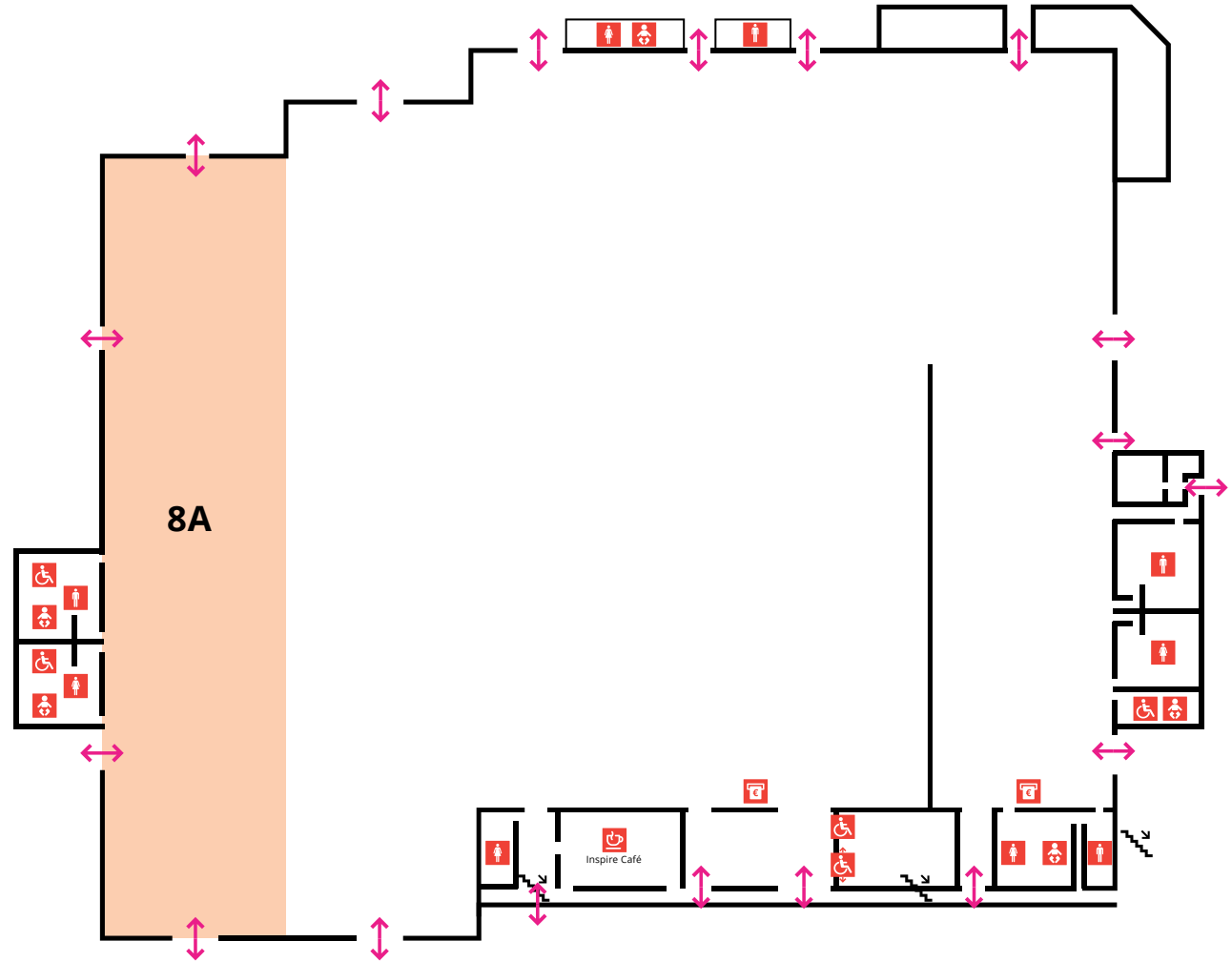
# Simmonsourt Pavilion

## Hall 8A

| HALL 8A   TECHNICAL DETAILS      |                     |
|----------------------------------|---------------------|
| Gross Area                       | 1,990 Sq m          |
| Width                            | 21.7 m              |
| Length                           | 91.5 m              |
| Height Max                       | 9 m                 |
| Height Min                       | 6 m                 |
| Floor Loading                    | 50 KN/Sq m          |
| Electrical Power                 | 2 x 160 Amp/3 Phase |
| Main Loading Door Height x Width | 5.61 m x 5.56 m     |
| Floor Level                      | Ground              |
| Wi-Fi                            | Available           |

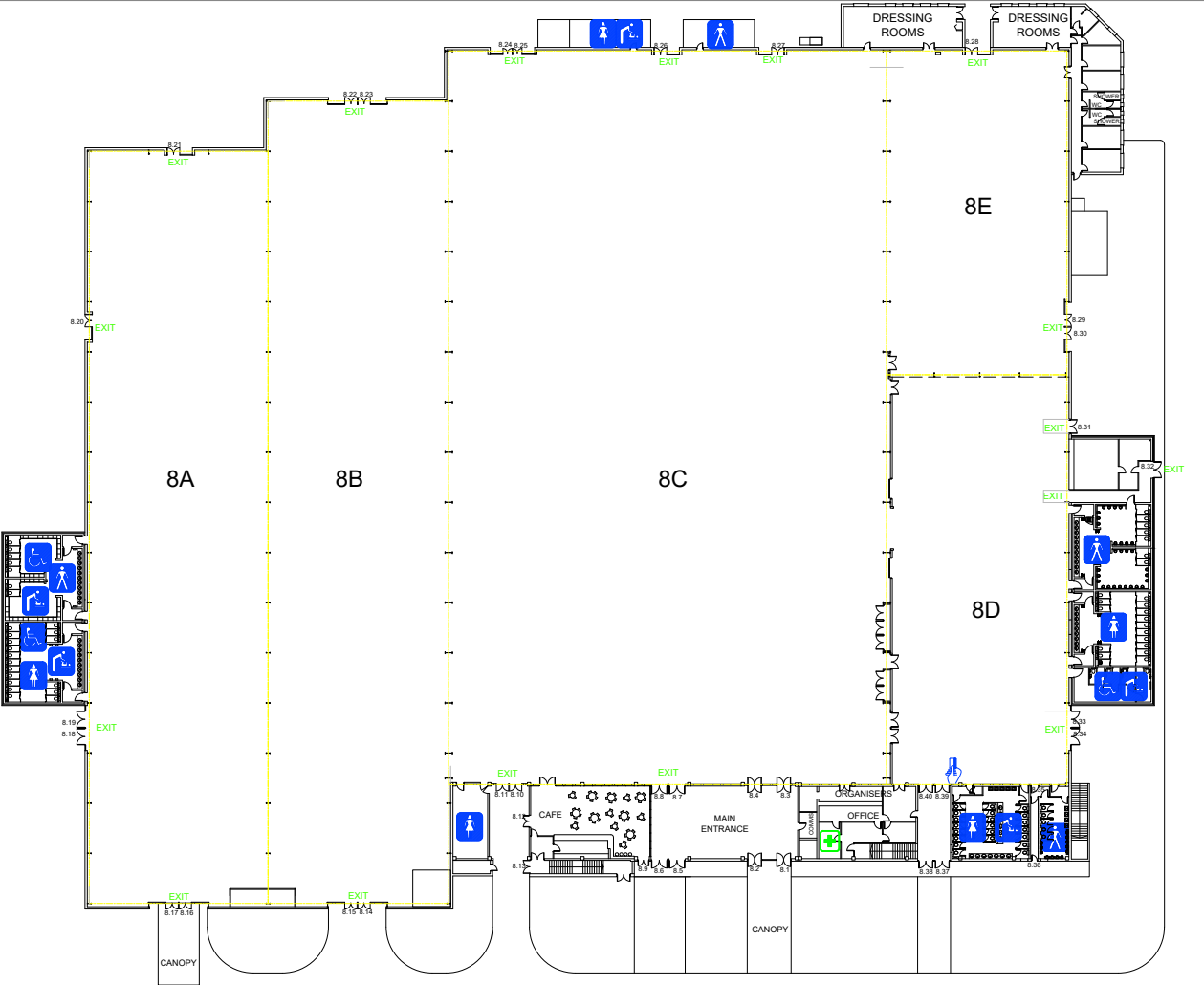
| CAPACITIES |       |
|------------|-------|
| Reception  | 2,600 |
| Theatre    | 2,100 |
| Banquet    | 1,180 |
| Classroom  | 1,224 |
| Exam       | 1,120 |
| Cabaret    | 864   |

**IMPORTANT:** The size and location of items such as a staging AV, lighting, bar, buffet tables etc. impact the capacities listed. The figures here are indicative of the maximum capacity in a space. The capacity for your event will depend on your layout and may be less than the figures stated.

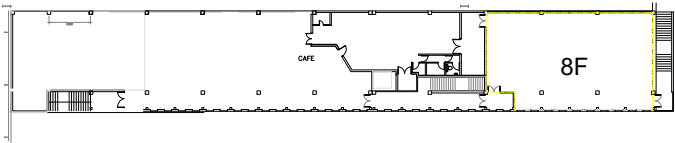


# Simmonsourt Pavilion

## Hall 8A – Details



GROUND FLOOR PLAN



FIRST FLOOR PLAN

